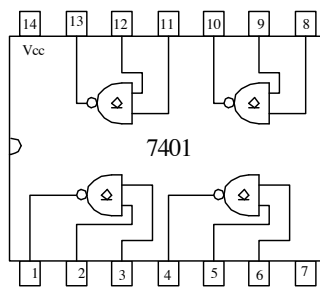
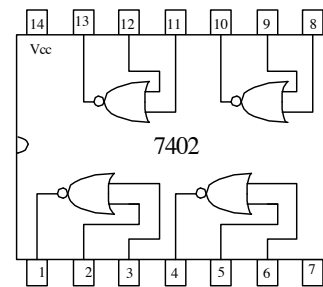


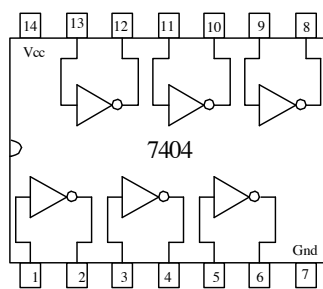
7400 Quad 2-input NAND



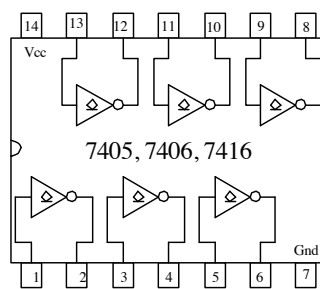
7401 Quad 2-input NAND  
(open-collector outputs)



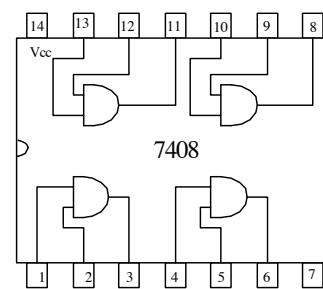
7402 Quad 2-input NOR



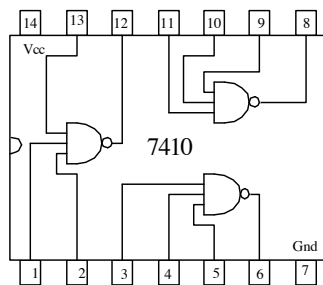
7404 Hex Inverter



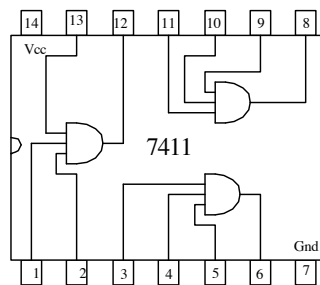
7405, 7406, 7416 Hex Inverter  
(open-collector outputs)



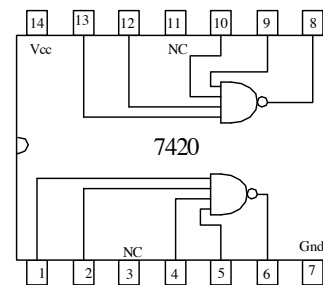
7408 Quad 2-input AND



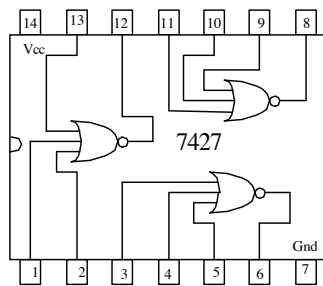
7410 Triple 3-input NAND



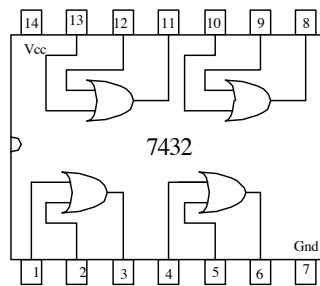
7411 Triple 3-input AND



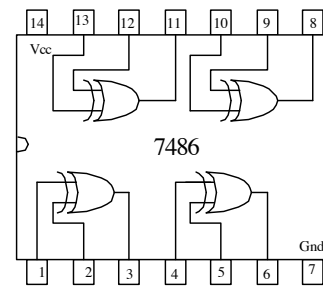
7420 Dual 4-input NAND



7427 Triple 3-input NOR



7432 Quad 2-input OR



7486 Quad 2-input Exclusive-OR